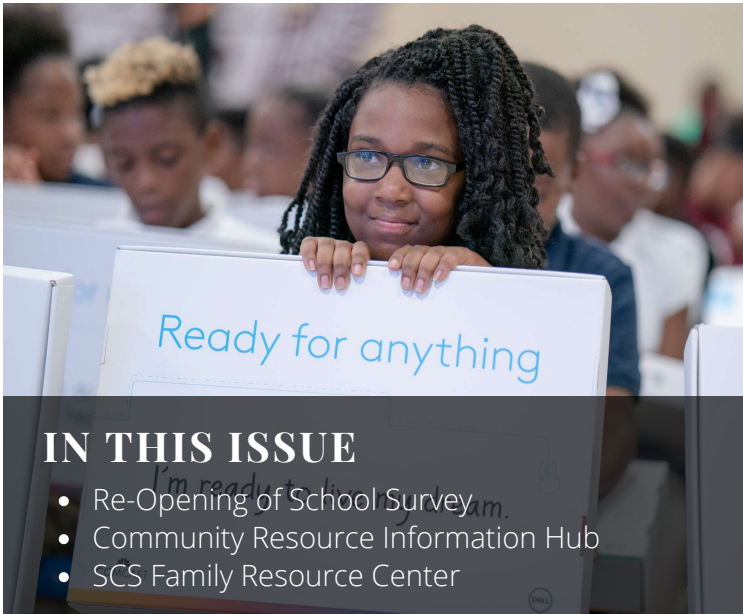




THE COMMUNITY ADVOCATE

SHELBY COUNTY BOARD OF EDUCATION COMMUNITY ENGAGEMENT & LEGISLATIVE ADVOCACY COMMITTEE UPDATE



IN THIS ISSUE

- Re-Opening of School Survey
- Community Resource Information Hub
- SCS Family Resource Center



SCS students returned to the classroom on Monday for the start of the 2021-22 school year. This marks the first time since the COVID-19 pandemic began in March 2020 that all students returned to school buildings.



MEETING SUMMARY

On August 17, the Community Engagement and Legislative Advocacy Committee met to present the re-opening of school survey results, community resource hub, family resource center, and more.

RE-OPENING OF SCHOOL SURVEY

The Family and Community Engagement (FACE) team presented statistics and findings from its Reopening of Schools Survey. Takeaways from the survey include the need for more homework help, school uniforms, after-school tutoring, and ACT Prep. The survey found the addition of family support resources including childcare, affordable housing, volunteer opportunities, and other community-based needs as a top priority.



Committee Co-Chair
Stephanie P. Love

SCS BOARD MEMBERS

Committee Co-Chair
Sheleah Harris



Michelle Robinson McKissack
District 1



Althea Greene
District 2



Stephanie P. Love
District 3



Kevin Woods
District 4



Sheleah Harris
District 5



Shante K. Avant
District 6



Miska Clay Bibbs
District 7



William "Billy" Orgel
District 8



Joyce Dorse Coleman
District 9



23 Partners and 2,000 Backpacks with Supplies at the Return Stronger Family Festival/Block Party



109 Parent Ambassadors from 73 Schools in Attendance at the Parent Ambassador Orientation



Teacher Toolbox Classroom Materials Supply Distribution during New Teacher Orientation



COMMUNITY RESOURCE INFORMATION HUB

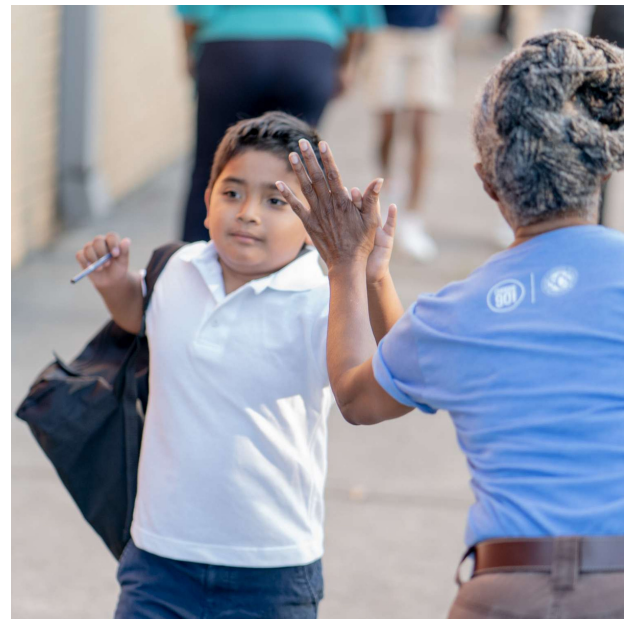
FACE, in partnership with United Way of the Mid-South, announced the development of its community resource information hub. This resource will provide families with a collection of information on after-school programs, summer camps, community centers, ESL and HiSET/GED services, computer literacy, cultural enrichment, family literacy, STEM enrichment, and more.

SCS FAMILY RESOURCE CENTER

The Family Resource Center, which aims to develop support for the District in the following areas:

- **Academic Support:** Homework Hotline for free homework help and tutoring
- **Behavioral Health:** Services and resources about physical, emotional, mental, and social health
- **Family Support:** Support and connections to partners who provide basic needs such as emergency food, clothing, utilities assistance, vision and medical assistance, and housing assistance
- **Immigration Support:** Naturalization resources and immigration

[Click here](#) to view these resources in more detail.



For more information and to review the details of the committee reports, [click here](#).

Committee meetings are for Board members to have in-depth discussions with District leadership on specific topics and provide feedback/input on items that affect the District. There are no official actions or votes during these meetings.